

Umbilical artery

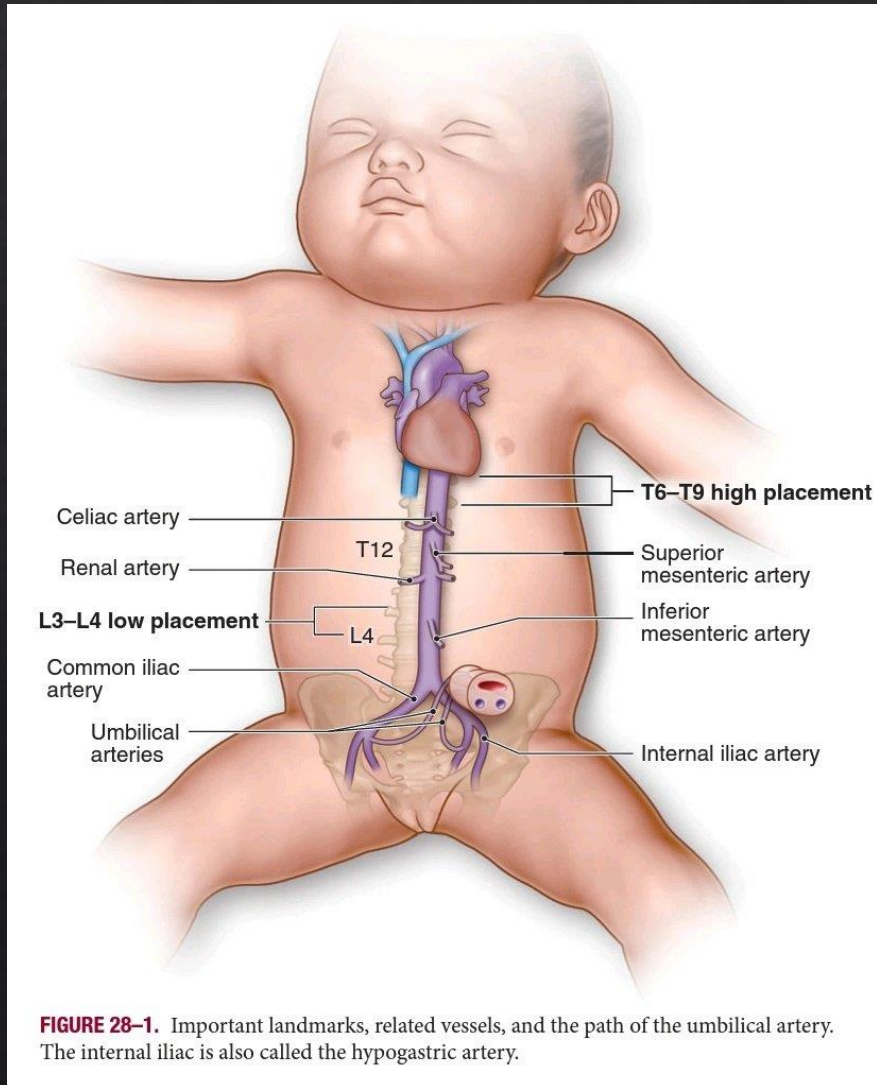
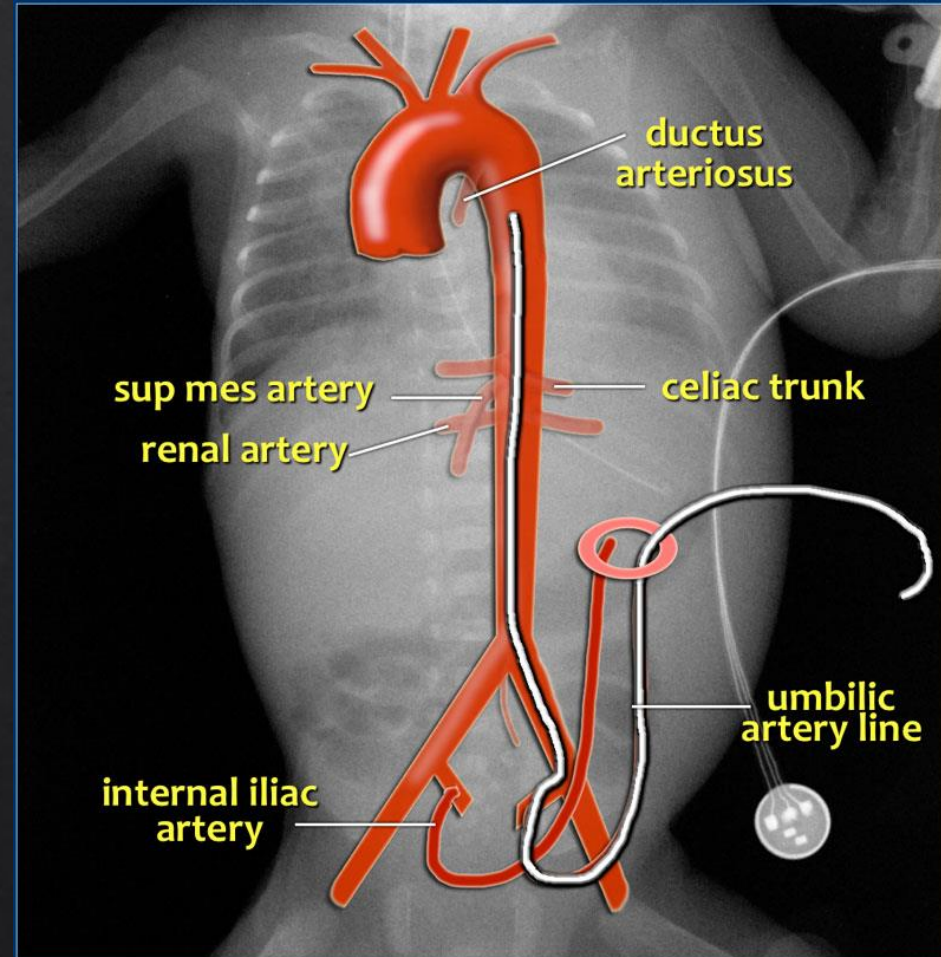


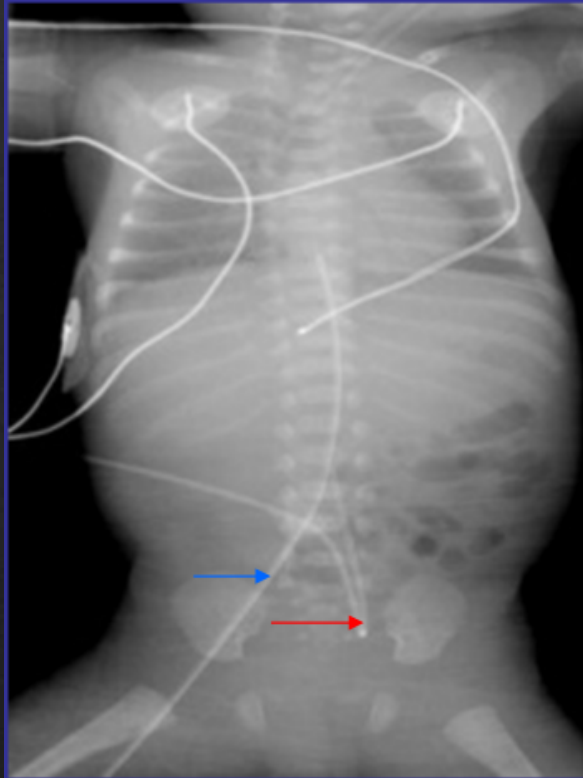
FIGURE 28-1. Important landmarks, related vessels, and the path of the umbilical artery. The internal iliac is also called the hypogastric artery.



Location

- ◆ In order to avoid placement into aortic branches, the catheter should be either in a high position above the celiac, mesenteric and renal arteries or in a low position below the inferior mesenteric artery:
- ◆ high position: T6-T9
- ◆ low position: L3-L5
- ◆ The high position is advisable since it leads to less vascular complications

UAC vs. UVC



The UAC (red arrow) initially coursing down contrasted with the UVC (blue arrow) extending superiorly

- Umbilical arterial catheters (UAC)
 - Initial downward course from the umbilical insertion into the internal iliac artery.
 - Tip should be positioned below L2
- Umbilical venous catheter (UVC)
 - Extend immediately superior from the umbilicus.
 - Tip should be positioned within 1 cm of the diaphragm

